

MAHARASHTRA UNIVERSITY OF HEALTH SCIENCES, NASHIK
Physiotherapy Faculty
INFRASTRUCTURE DETAILS OF COLLEGE AND HOSPITAL

Sr. No.	Particulars to be verified	Actual Available	Remark
College			
1	Land details (as per M.S.R.): Total land (Not less than 2 acres), (Owned or leased land), unitary or not, NA of all land, 7/12 extracts of all land, Constructed Area Details 28000+Anatomy+Physiology+Audio..Sq.ft./. (Applicable only to Private Colleges). (Verify land documents & Government permissions documents are uploaded on College Website.) (No Land/ Construction documents shall be submitted to the University. Only deficit information to be pointed out to the University).	Available	Adequate
2	Dean office, Professor's Office, Associate Professor's Office, Assistant Professor's Office, Administrative Block as per M.S.R..	Available	Adequate
3	All DEPARTMENTS (as per M.S.R.): Human Anatomy, Human Physiology, Electrotherapy & Electrodiagnosis, Kinesiotherapy & Physical Diagnosis, Musculoskeletal Physiotherapy, Neuro Physiotherapy, Cardiovascular & Respiratory Physiotherapy, Community Physiotherapy	Available	Adequate
4	College Library (as per M.S.R.): Area (1200 Sq.Ft.), Reading Rooms for Students, Staff Reading Room, Room for Books & Journals, Rooms for Librarian and Other Staff; Journal Room, Number of Computers with internet facility with minimum 15 nodes, Photocopier Machine, Total No. of books, Number of Journals: (Titles only), (Multiple volumes / issues of one title should be counted as ONE). No. of books added in last year: 74 No. of Journals titles added in last year: 05 [Bills shall be verified by the Committee.] Digital Library /e – Library availability MUHS Digital Library Availed	Available Available Available Available	Adequate Adequate Adequate Adequate
5	Details of all Lecture Theatres with Seating Capacity (as per M.S.R.) along with AV Aids including overhead projector, LCD Projector and a microphone / multi-Podium system. There shall be provision for E-class. Lecture halls must have facilities for conversion into E-class/Virtual class for teaching.		
6	Conference Room for Faculty: (as per M.S.R.)	Available	Adequate
7	Mini Auditorium: (15 Sq.Ft./Student) (as per M.S.R.)	Available	Adequate
8	Class Rooms: (15 Sq.Ft./Student) (as per M.S.R.)	Available	Adequate
9	Core Laboratories: (as per M.S.R.) Exercise Physiology & Fitness : Computerized Treadmill, Bicycle ergometer with speedometer, Skin fold caliper, Body composition analyzer, Weighing scale with height measurement, Spirometer, Peak flow meter, Energy Consumption analyzer, Pulse Oxymeter, ECG, Flutter, Inspiratory Muscle Trainer, Oxygen Cylinder, Nebulizer (ultrasonic), Nebulizer (Jet), Portable Suction Machine, B.P.Apparatus & Stethoscope, Shuttle Walk Test Software (Desirable).	Available	Adequate
10	Physiotherapy Museum: (as per M.S.R.) (Desirable)	Available	Adequate
11	Yoga / Clinical Skill Laboratory: (as per M.S.R.) Yoga Mats / Pediatric Mats / Mats for Training Neurotherapeutic Skills, Adjustable Manual Therapy Plinth, Therabands & Theratubes, Swiss balls, Stability Trainers, Sensory Assessment Kit, Balance Assessment & Training Equipment, Stools, Benches, Wheel Chairs, Stairs, Ramps For Training Transfers.	Available	Adequate
12	University Examination Infrastructure: Strong Room for examination a) (Area- 1200 sq. ft, b) Shelf, c) Steel cupboard – 1, d) CCTV, Photocopier Machine, Examination hall with benches, Parking Facility for University vehicle, Guest house facility	Available	Adequate
13	Residential quarter facility for staff: Teaching Non-teaching, Paramedical & Nursing staff	Available	Adequate

Principal

Shri Ramchandra Institute of Medical Sciences (SRIMS)

College of Physiotherapy

Chh. Sambhajinagar.

14	Other facilities: Hospital Waste Management Unit, Research Cell, Intercom Network, Playground, P.T Teacher or Instructor, Common Rooms for Boys, Common Room for Girls, Cafeteria, Facility for indoor games, Gymnasium / Gymkhana Facility	Available	Adequate
15	Hostel Facility: Boys (UG), Girls (UG), Interns, Canteen Facility, Warden/ Rector, Hygiene, etc. [Note: Verify Canteen Facility is monitored as per MUHS Circular No.18/2019 dated 19/03/2019.]	Available	Adequate
	<ul style="list-style-type: none"> As per Central Council Norms/ University Norms, above Infrastructure must be available at College and all information with photographs must be uploaded on College Website. If Infrastructure is available, then mark "Adequate" & do not attach any documents. In case of "Inadequate", it must be marked as "Inadequate" with documentary evidence. 		

HOSPITAL			
16	Hospital Details	Actual Available	Remark
	Name of the Hospital : Dr. BAVP's Dr. Hedgewar Hospital	Available	Adequate
	Bed Strength : 610		
	Number of beds registered as per BNH act : 610		
17	Clinical Facilities : Parent / Attached Hospital (Govt./Civil/Private) Must be within 10km. radius of the College		
a.	Total built up area of Hospital (in Sq.Ft.) : ...16200 sq. m	Available	Adequate
b.	Whether Hospital is registered under any act under Local Authority such as Corporation, Municipality, Gram Panchayat etc.: (Please attach copy of registration certificate)	Available	Adequate
c.	Whether Casualty is available and functional :	Available	Adequate
18	Required Beds (UG & PG) Indoor and Outdoor Facility (as per M.S.R.)		Adequate
19	Ambulances : Owned, Hire		Hired
	Any other		
	<ul style="list-style-type: none"> As per Central Council Norms/ University Norms, above Infrastructure must be available at College and all information with photographs must be uploaded on College Website. If Infrastructure is available, then mark "Adequate" & do not attach any documents. In case of "Inadequate", it must be marked as "Inadequate" with documentary evidence. 		



Principal
ShriRanchandra Institute of Medical Sciences (SRIMS)
College of Physiotherapy
Chh. Sambhajinagar.

Infrastructure

College Building: Own / Rented Own

Total built up area available for college building: 28000+A+P+Audio.Sq.ft.

Intake capacity: 40



The below mentioned is Minimum Standard Requirement For UG

Space allotment	10 Intake	30 Intake	31 to 40 Intake	41 to 50 Intake	51 to 60 Intake	61 to 100 Intake	Actual available	Lacuna
Administrative office with storage space	300	300	300	400	400	500	600	Nil
Director/dean/principal /H.O.D.'s office	400	400	400	400	400	400	570	Nil
Professor's office	NA	300	300	600	600	750	Adjust in Dept.	Nil
Associate Professor's office	100	400	400	600	600	1000		Nil
Assistant Professor's office	225	525	525	600	600	1275		Nil
Conference room	300	300	300	300	500	500	350 (Shared)	Nil
Mini Auditorium	1500	1500	1500	1500	1500	1600	3000 (Shared)	Nil
Anatomy	1200	1200	1200	1200	1500	1500	6285 (Shared with RKDMC)	Nil
Physiology	1200	1200	1200	1200	1500	1500	2098 (Shared with RKDMC)	Nil
Electrotherapy & Electrodiagnosis	1200	1200	1200	1200	1500	1500	1500	Nil
Kinesiology, Kinesiotherapy & Movement Sciences	1200	1200	1200	1200	1500	1500	1500	Nil
Clinical Skill Lab / Yoga Lab	1200	1200	1200	1200	1500	1500	1200	Nil
Therapeutic Gym	1200	1200	1200	1200	1500	1500	1200	Nil
Indoor-physiotherapy department	1200	1200	1200	1200	1200	1200	1200	Nil
Out-door physiotherapy department	5000	5000	5000	5000	6000	6000	4500	Nil
Recreational Area	600	600	1000	1200	1200	1200	3000	Nil
Library Space	300	600	900	1000	1200	2000	2050	Nil
Class Rooms (15 Sq Ft per student 1 class room for each year)	150 / Classroom	450 / Classroom	600 / Classroom	750 / Classroom	900 / Classroom	1500 / Classroom	3000	Nil
	600	1800	2400	3000	3600	6000		
Student Girls Common Rooms	600	500	800	1000	1000	1200	500	Nil
Student Boys Common Rooms	250	250	250	400	400	600	500	Nil
Final Year Departmental Area	1200	1200	1200	1500	1500	2000	4100	Nil
Total Available	19775	22075	23675	25900	29700	35225	37153	

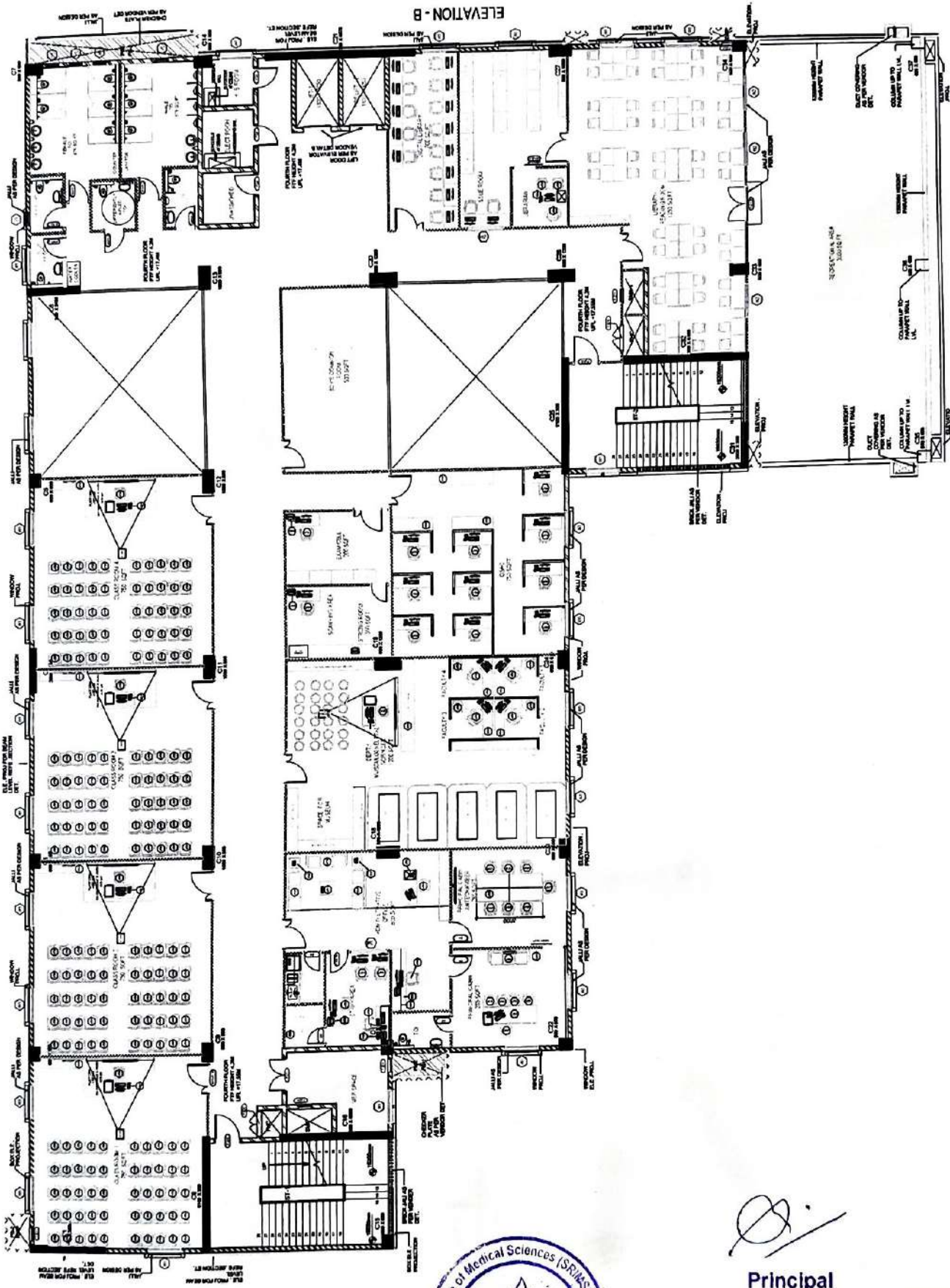
* In absence of attached Medical College Library space should be 2000 Sq.Ft



Dean/ Principal Stamp & Signature
Principal

Shri Ramchandra Institute of Medical Sciences (SRIMS)
College of Physiotherapy
Chh. Sambhajinagar.

Verified by The LIC Committee Members



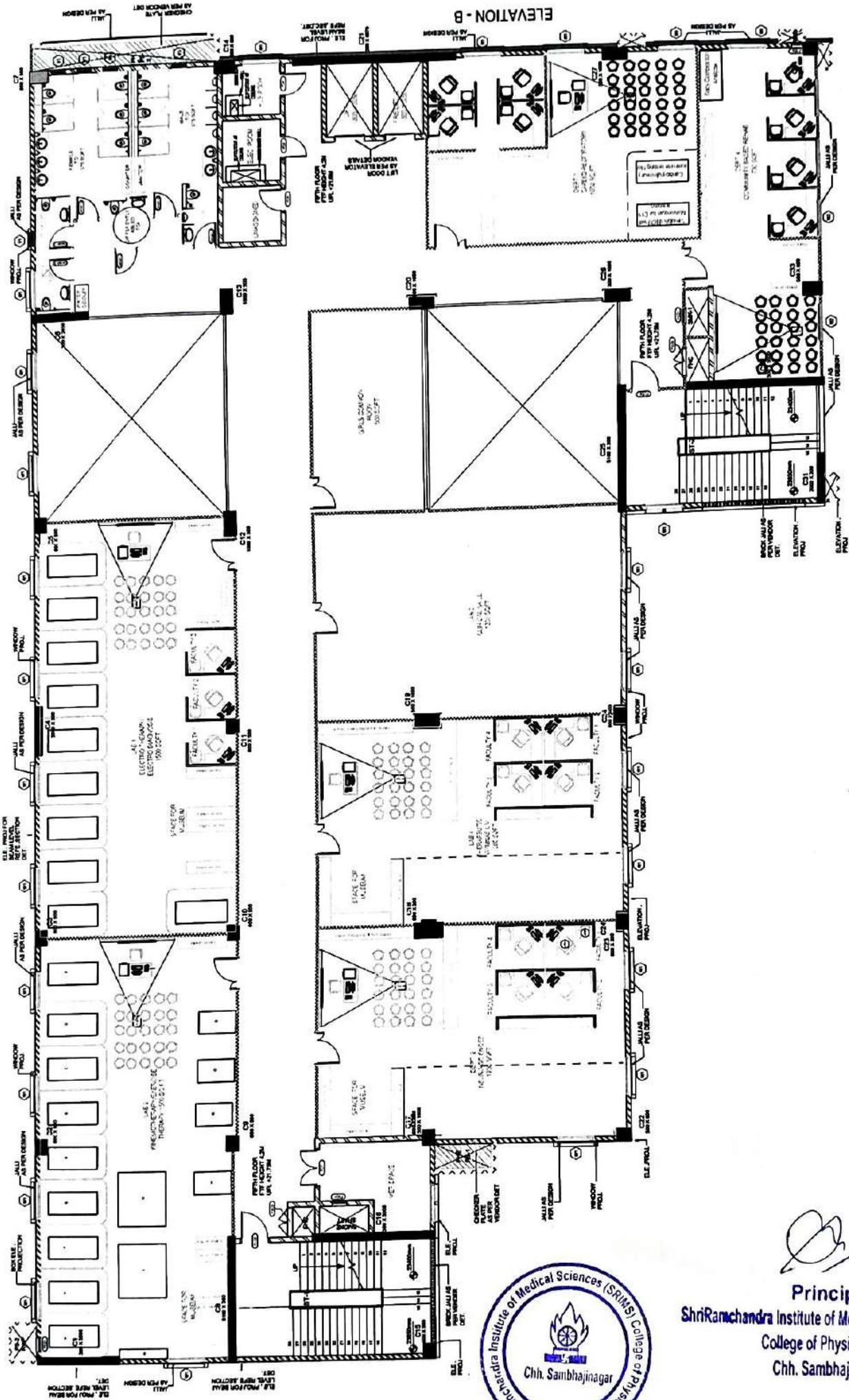
SRIMS COLLEGE OF PHYSIOTHERAPY

4th FLOOR



(Signature)

Principal
 Shri Ramchandra Institute of Medical Sciences (SRIMS)
 College of Physiotherapy
 Chh. Sambhajinagar.



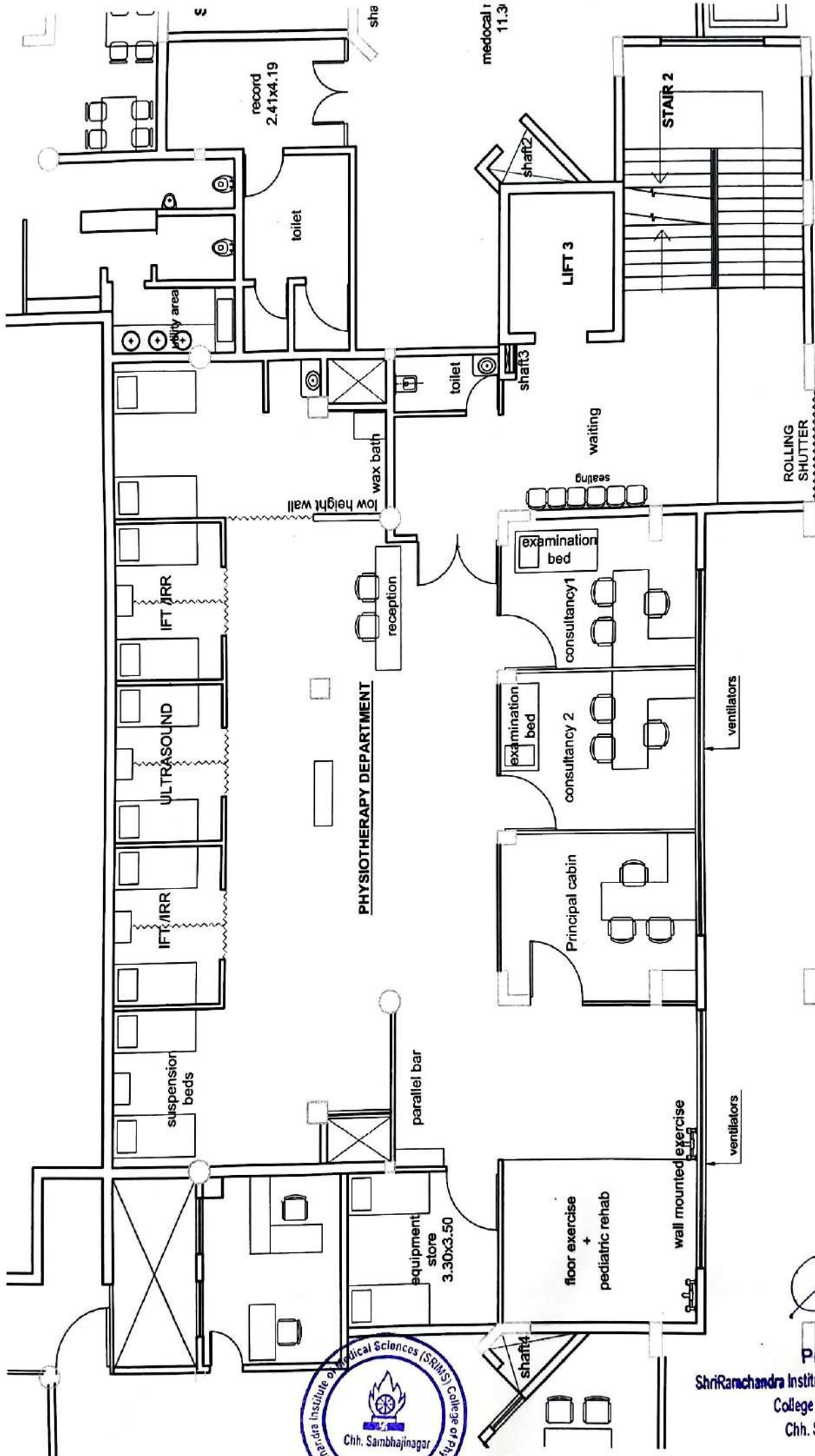
SRIMS COLLEGE OF PHYSIOTHERAPY

5th FLOOR



[Handwritten Signature]

Principal
 ShriRamchandra Institute of Medical Sciences (SRIMS)
 College of Physiotherapy
 Chh. Sambhajinagar.



(Signature)

Principal
 Sri Ramachandra Institute of Medical Sciences (SRM's)
 College of Physiotherapy
 Chh. Sambhajinagar.